

VAS 6602 / VAS 6603 –

the new wheel balancers
for optimal tyre service



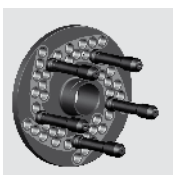
- New technology for even quicker processing
- Simplified operation thanks to LED ring illumination
- Laser beam positioning aid for application of weights (VAS 6603)

VAS 6602 – the new, smart LCD medium-class machine



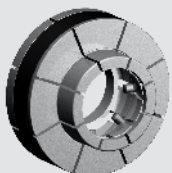
ASE-Nr: 422 095 00 000

- 11 balancing programs for passenger cars, light trucks and motorcycle wheels (incl. PAX and aluminium program)
- Automatic start / stop up to automatic wheel braking
- New weight tray with a numerous storage bays
- Electronic scanner arm for rim data detection (distance, width, diameter)
- Simplified attachment of weights with LED-ring to illuminate the rim from the inside
- Simple and precise attachment of concealed adhesive weights with Easyfix®-data arm and electromagnetic data arm brake when the corresponding balanced position is reached
- User-friendly positioning „at 3, 6, 12 o' clock“
- Split program for placing weights precisely behind spokes
- Integrated match program
- Electronic pedal brake for fixing the shaft while clamping the wheels or correcting imbalance
- Simplified machine maintenance thanks to integrated calibration and self-diagnostic software

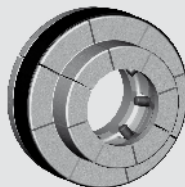


Optional recommended:
VAS 6243 type base plate
5-hole

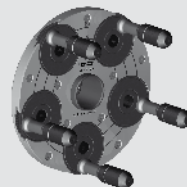
Empfohlenes Zubehör:



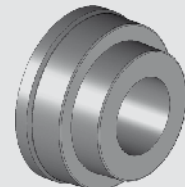
VAS 5271,
DuoExpert 501



VAS 6241,
DuoExpert 502



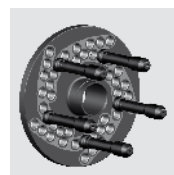
VAS 6611, universal
base plate 5-hole



VAS 6610, centring sleeve
66,7 / 84-85

VAS 6603 – the new high-tech monitoring machine

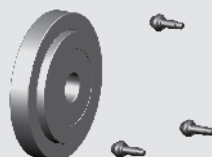
- 11 balancing programs for passenger cars, light trucks and motorcycle wheels (incl. PAX and aluminium program)
- Automatic start / stop up to automatic wheel braking
- New weight tray with a numerous storage bays
- Electronic scanner arm for rim data detection (distance, width, diameter)
- Simplified attachment of weights with LED-ring to illuminate the rim from the inside Laser positioning aid for attaching weights
- Simple and precise attachment of concealed adhesive weights with Easyfix®-data arm and electromagnetic data arm brake when the corresponding balanced position is reached
- User-friendly positioning „at 3, 6, 12 o' clock“
- Split program for precise positioning of weights behind the spokes
- Integrated match program
- Electronic pedal brake for fixing the shaft while clamping the wheels or correcting imbalance
- Simplified machine maintenance thanks to integrated calibration and self-diagnostic software



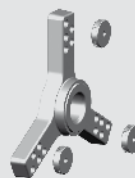
Optional recommended:
VAS 6243 type base plate
5-hole



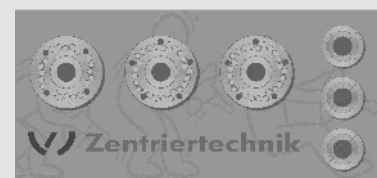
VAS 6609, type base
plate 6 x 130



VAS 6608, centring
disk Ø 161 mm



VAS 6607,
3-arm-star 6 x 205



VAS 5271,
wall plate

Technical Data

Model	VAS 6602	VAS 6603
Scope of application		
Rim width	up to 21"	up to 21"
Rim diameter	12" - 30"	12" - 30"
Max. wheel diameter	1,200 mm	1,200 mm
Max. wheel weight	80 kg	80 kg
Motor		
Power supply (other voltages upon request)	1~ 230V, 50 – 60Hz	
Wheel balancing speed	210/250 RPM	
Dimensions		
W x H x D	1,200 x 1,700 x 1,600 mm	
Weight / colour		
Weight with the manual locking:	217 kg	225 kg
Weight with the pneumatic locking:	230 kg	238 kg
Coating VW-grey	RAL 7040	

Scope of delivery

- 1 Machine (VAS 6602 or 6603)
- 1 Set of operating instructions

24 month guarantee for all parts.

We reserve the right to modify technical specifications and equipment. Images may contain optional extras.

Local distributor:

Beissbarth GmbH
 A Bosch Group Company
 Hanauer Strasse 101
 80993 Muenchen (Munich, Bavaria)
 Germany

Tel. +49-89-149 01-0
 Fax +49-89-149 01-240

www.beissbarth.com
 sales@beissbarth.com